

CITY OF GEORGETOWN

ORDINANCE NO. 19 - 001

ALISON LUNDERGAN GRIMES  
SECRETARY OF STATE  
COMMONWEALTH OF KENTUCKY  
BY Hardie Adkinson

AN ORDINANCE AMENDING ORDINANCE 18-019 AND CORRECTING THE LEGAL DESCRIPTION CONTAINED THEREIN.

SPONSOR: Marvin Thompson

WHEREAS, the City of Georgetown passed Ordinance 18-019, annexing a certain unincorporated area of Scott County into the City limits of the City of Georgetown; and

WHEREAS, the legal description contained in Ordinance 18-019 was in error.

NOW, THEREFORE, Be it ordained by the City of Georgetown, Kentucky:

SECTION ONE

Section 1 of Ordinance 18-019 is amended as follows:

A TRACT OR PARCEL OF LAND SITUATED ON THE SOUTH OF MCCLELLAND CIRCLE APPROXIMATELY 0.6 MILES WEST OF THE INTERSECTION OF MCCLELLAND CIRCLE AND LEXINGTON ROAD (U.S. 25) AND BEING MORE FULLY DESCRIBED AND BOUNDED AS FOLLOWS:

**BEGINNING AT A POINT** in the southern right of way of McClellan Circle, said point also being the northwest corner of McClelland Circle Partners, LLC (known as 252 McClelland Circle); thence with the western line of McClelland Circle Partners, LLC South 24 Degrees 24 Minutes 26 Seconds West a distance of 1183.65 feet to a point; thence leaving said western line South 52 Degrees 16 Minutes 11 Seconds West a distance of ~~104.04~~ 221.4 feet to a point; North 70 Degrees 39 Minutes 08 Seconds West a distance of 176.74 feet to a point; thence North 36 Degrees 35 Minutes 05 Seconds West a distance of 73.95 feet to a point; thence North 40 Degrees 03 Minutes 33 Seconds West a distance of 50.43 feet to a point; thence North 73 Degrees 10 Minutes 40 Seconds West a distance of 27.31 feet to a point; thence South 89 Degrees 19 Minutes 44 Seconds West a distance of 62.81 feet to a point; thence North 75 Degrees 37 Minutes 22 Seconds West a distance of 60.04 feet to a point; thence North 68 Degrees 28 Minutes 28 Seconds West a distance of 60.23 feet to a point; thence North 80 Degrees 37 Minutes 10 Seconds West a distance of 60.47 feet to a point; thence North 72 Degrees 10 Minutes 23 Seconds West a distance of 60.02 feet to a point; thence North 65 Degrees 05 Minutes 52 Seconds West a distance of 60.64 feet to a point; thence North 73 Degrees 06 Minutes 46 Seconds West a distance of 60.00 feet to a point; thence North 83 Degrees 57 Minutes 45 Seconds West a distance of 61.02 feet to a point; thence North 85 Degrees 22 Minutes 13 Seconds West a distance of 61.32 feet to a point; thence North 75 degrees 25 Minutes 06 Seconds West a distance of 81.43 feet to a point; thence North 56 Degrees 45 Minutes 29 Seconds West a distance of 98.95 feet to a point; thence North 78

Degrees 07 Minutes 09 Seconds West a distance of 76.82 feet to a point; thence South 00 Degrees 58 Minutes 38 Seconds East a distance of 16.24 feet to a point; thence South 82 Degrees 18 Minutes 57 Seconds West a distance of 136.71 feet to a point; thence South 89 Degrees 37 Minutes 09 Seconds West a distance of 134.57 feet to a point; thence North 75 Degrees 26 Minutes 11 Seconds West a distance of 213.22 feet to a point in the eastern line of Dudley Jennings; thence with the eastern line of Jennings North 24 Degrees 58 Minutes 42 Seconds East a distance of 804.13 feet to a point; thence leaving the eastern line of Jennings North 71 Degrees 08 Minutes 02 Seconds East a distance of 224.50 feet to a point; thence North 50 Degrees 52 Minutes 44 Seconds East a distance of 170.11 feet to a point; thence North 04 Degrees 42 Minutes 30 Seconds East a distance of 88.97 feet to a point; thence North 51 Degrees 06 Minutes 06 Seconds East a distance of 128.99 feet to a point; thence North 23 Degrees 18 Minutes 00 Seconds West a distance of 109.52 feet to a point; thence South 57 Degrees 03 Minutes 52 Seconds West a distance of 339.75 feet to a point in the eastern line of Jennings; thence with the eastern line of Jennings for the following three (3) calls: North 24 Degrees 58 Minutes 42 Seconds East a distance of 377.49 feet to a point; North 58 Degrees 43 Minutes 09 Seconds East a distance of 289.75 feet to a point; thence North 59 Degrees 17 Minutes 20 Seconds East a distance of 272.90 feet to a point in the southwestern corner of the GMWSS property; thence with the southern line of the GMWSS property South 31 Degrees 21 Minutes 37 Seconds East a distance of 59.30 feet to a point in the southeastern corner of the GMWSS property; thence with the eastern line of GMWSS property for the following three (3) calls: North 58 Degrees 38 Minutes 15 Seconds East a distance of 23.95 feet to a point; thence North 44 Degrees 32 Minutes 30 Seconds East a distance of 37.12 feet to a point; thence North 58 Degrees 38 Minutes 19 Seconds East a distance of 70.01 feet to point in the northeastern corner of the GMWSS property; thence with the northern line of the GMWSS property North 29 Degrees 22 Minutes 06 Seconds West a distance of 48.80 feet to a point in the eastern line Dudley Jennings; thence with Jennings North 59 Degrees 17 Minutes 20 Seconds East a distance of 52.16 feet to a point in the southern right of way of McClelland Circle; thence with said right of way for the following five (5) calls: South 48 Degrees 11 Minutes 58 Seconds East a distance of 62.84 feet to a point; thence South 52 Degrees 21 Minutes 53 Seconds East a distance of 101.12 feet to a point; thence South 42 Degrees 32 Minutes 38 Seconds East a distance of 222.06 feet to a point; thence South 45 Degrees 28 Minutes 14 Seconds East a distance of 350.14 feet to a point; thence South 44 Degrees 52 minutes 48 Seconds East a distance of 547.74 feet to the **POINT OF BEGINNING**.

The above described parcel contains 59.83 acres.

## SECTION TWO

If any section, subsection, sentence, clause or phrase of this ordinance is held unconstitutional or otherwise invalid, such infirmity shall not affect the validity of the remaining portions of this ordinance.

SECTION THREE

All ordinances or parts of ordinances in conflict with this ordinance are hereby repealed.

SECTION FOUR

This ordinance shall take effect after its passage and publication according to law.

---

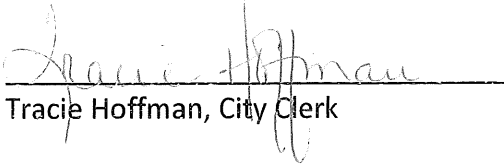
PUBLICLY INTRODUCED AND READ FIRST TIME: January 14, 2019

PUBLICLY READ SECOND TIME AND PASSED: January 28, 2019

APPROVED:

  
Tom Prather, Mayor

ATTEST:

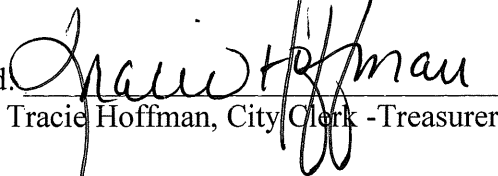
  
Tracie Hoffman, City Clerk

STATE OF KENTUCKY)  
(SCT.  
COUNTY OF SCOTT )

I, Clerk of the City of Georgetown, Kentucky, and as such custodian of the Seal and all the records of or pertaining to said City, do hereby certify the foregoing to be a true and accurate copy of ordinance number 19-001.

IN TESTIMONY WHEREOF, witness my hand, the Seal of said City on this the 6th day of February 2019.

Signed:

  
Tracie Hoffman, City Clerk -Treasurer

**CITY OF GEORGETOWN**  
**ORDINANCE NO. 2019 - 001**

AN ORDINANCE AMENDING ORDINANCE 18-019 AND CORRECTING THE LEGAL DESCRIPTION CONTAINED THEREIN.

**SUMMARY**

1. Corrects the legal description contained in Ordinance 18-019.
2. Provides for an effective date upon passage and publication.

PUBLICLY INTRODUCED AND READ FIRST TIME:      January 14, 2019

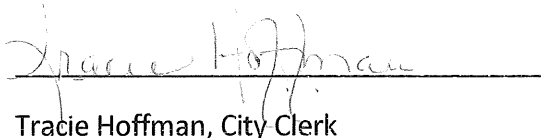
PUBLICLY READ SECOND TIME AND PASSED:      January 28, 2019

APPROVED:

  
\_\_\_\_\_

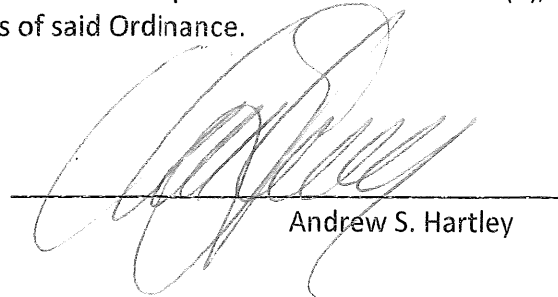
Tom Prather, Mayor

ATTEST:

  
\_\_\_\_\_

Tracie Hoffman, City Clerk

I, Andrew S. Hartley, hereby certify I am an Attorney licensed to practice law in the Commonwealth of Kentucky. My office is located at 100 North Court Street, Georgetown, Kentucky 40324. I further certify the foregoing Summary of Ordinance 19-001 of the City of Georgetown, Kentucky, was prepared in accordance with the requirements of KRS 83A.060(9), and is a true and accurate summary of the contents of said Ordinance.

  
\_\_\_\_\_

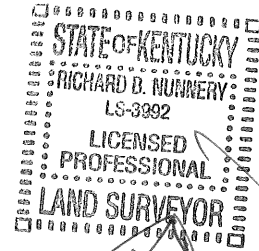
Andrew S. Hartley

# EA Partners, PLLC



CIVIL ENGINEERS • LAND SURVEYORS • LANDSCAPE ARCHITECTS  
3111 WALL STREET  
LEXINGTON, KENTUCKY 40513  
PHONE (859) 296-9889  
WWW.EAPARTNERS.COM

BRADLEY - FORD PROPERTY  
(a portion of)  
McClelland Circle  
Annexation Legal Description  
Georgetown Scott County, Kentucky



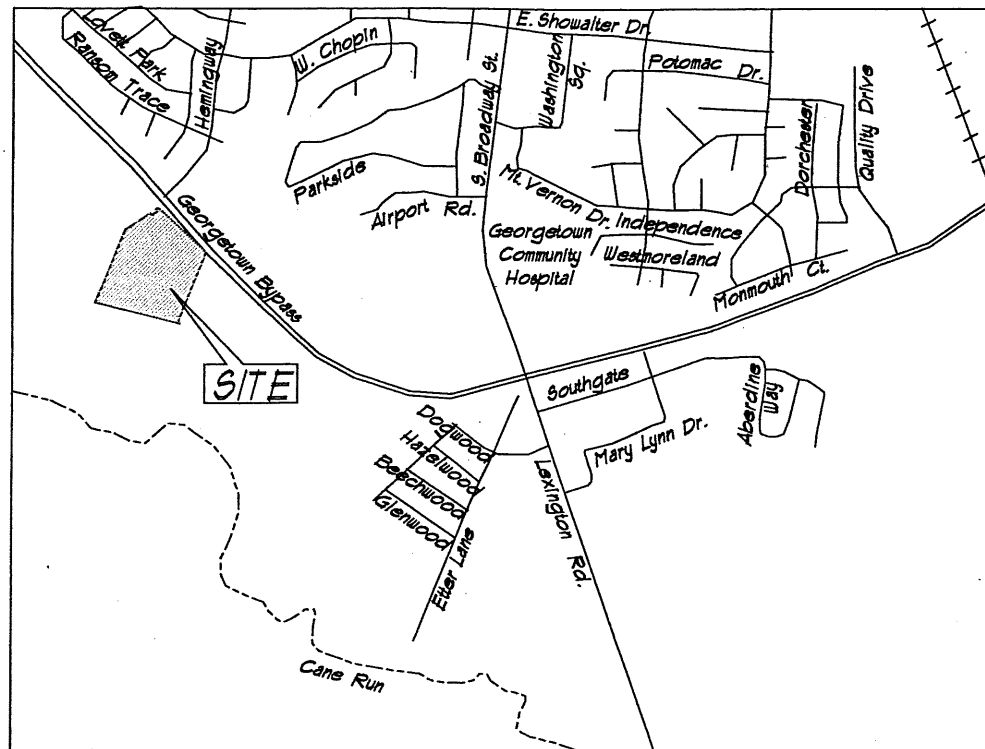
*R. Nunnery*  
2/28/19

A TRACT OR PARCEL OF LAND SITUATED ON THE SOUTH OF McCLELLAND CIRCLE APPROXIMATELY 0.6 MILES WEST OF THE INTERSECTION OF McCLELLAND CIRCLE AND LEXINGTON ROAD (U.S. 25) AND BEING MORE FULLY DESCRIBED AND BOUNDED AS FOLLOWS:

**BEGINNING AT A POINT** in the southern right of way of McClellan Circle, said point also being the northwest corner of McClelland Circle Partners, LLC (known as 252 McClelland Circle); thence with the western line of McClelland Circle Partners, LLC South 24 Degrees 24 Minutes 26 Seconds West a distance of 1183.65 feet to a point; thence leaving said western line South 52 Degrees 16 Minutes 11 Seconds West a distance of 221.40 feet to a point; North 70 Degrees 39 Minutes 08 Seconds West a distance of 176.74 feet to a point; thence North 36 Degrees 35 Minutes 05 Seconds West a distance of 73.95 feet to a point; thence North 40 Degrees 03 Minutes 33 Seconds West a distance of 50.43 feet to a point; thence North 73 Degrees 10 Minutes 40 Seconds West a distance of 27.31 feet to a point; thence South 89 Degrees 19 Minutes 44 Seconds West a distance of 62.81 feet to a point; thence North 75 Degrees 37 Minutes 22 Seconds West a distance of 60.04 feet to a point; thence North 68 Degrees 28 Minutes 28 Seconds West a distance of 60.23 feet to a point; thence North 80 Degrees 37 Minutes 10 Seconds West a distance of 60.47 feet to a point; thence North 72 Degrees 10 Minutes 23 Seconds West a distance of 60.02 feet to a point; thence North 65 Degrees 05 Minutes 52 Seconds West a distance of 60.64 feet to a point; thence North 73 Degrees 06 Minutes 46 Seconds West a distance of 60.00 feet to a point; thence North 83 Degrees 57 Minutes 45 Seconds West a distance of 61.02 feet to a point; thence North 85 Degrees 22 Minutes 13 Seconds West a distance of 61.32 feet to a point; thence North 75 degrees 25 Minutes 06 Seconds West a distance of 81.43 feet to a point; thence North 56 Degrees 45 Minutes 29 Seconds West a distance of 98.95 feet to a point; thence North 78 Degrees 07 Minutes 09 Seconds West a distance of 76.82 feet to a point; thence South 00 Degrees 58 Minutes 38 Seconds East a distance of 16.24 feet to a point; thence South 82 Degrees 18 Minutes 57 Seconds West a distance of 136.71 feet to a point; thence South 89 Degrees 37 Minutes 09 Seconds West a distance of 134.57 feet to a point; thence North 75 Degrees 26 Minutes 11 Seconds West a distance of 213.22 feet to a point in the eastern line of Dudley Jennings; thence with the eastern line of Jennings North 24

Degrees 58 Minutes 42 Seconds East a distance of 804.13 feet to a point; thence leaving the eastern line of Jennings North 71 Degrees 08 Minutes 02 Seconds East a distance of 224.50 feet to a point; thence North 50 Degrees 52 Minutes 44 Seconds East a distance of 170.11 feet to a point; thence North 04 Degrees 42 Minutes 30 Seconds East a distance of 88.97 feet to a point; thence North 51 Degrees 06 Minutes 06 seconds East a distance of 128.99 feet to a point; thence North 23 Degrees 18 Minutes 00 Seconds West a distance of 109.52 feet to a point; thence South 57 Degrees 03 Minutes 52 Seconds West a distance of 339.75 feet to a point in the eastern line of Jennings; thence with the eastern line of Jennings for the following three (3) calls: North 24 Degrees 58 Minutes 42 Seconds East a distance of 377.49 feet to a point; North 58 Degrees 43 Minutes 09 Seconds East a distance of 289.75 feet to a point; thence North 59 Degrees 17 Minutes 20 Seconds East a distance of 272.90 feet to a point in the southwestern corner of the GMWSS property; thence with the southern line of the GMWSS property South 31 Degrees 21 Minutes 37 Seconds East a distance of 59.30 feet to a point in the southeastern corner of GMWSS property; thence with the eastern line of GMWSS property for the following three (3) calls: North 58 Degrees 38 minutes 15 Seconds East a distance of 23.95 feet to point; thence North 44 Degrees 32 Minutes 30 Seconds East a distance of 37.12 feet to a point; thence North 58 Degrees 38 Minutes 19 Seconds East a distance of 70.01 feet to point in the northeastern corner of the GMWSS property; thence with the northern line of the GMWSS property North 29 Degrees 22 Minutes 06 Seconds West a distance of 48.80 feet to a point in the eastern line Dudley Jennings; thence with Jennings North 59 Degrees 17 Minutes 20 Seconds East a distance of 52.16 feet to a point in the southern right of way of McClelland Circle; thence with said right of way for the following five (5) calls South 48 Degrees 11 Minutes 58 Seconds East a distance of 62.84 feet to a point; thence South 52 Degrees 21 Minutes 53 Seconds East a distance of 101.12 feet to a point; thence South 42 Degrees 32 Minutes 38 Seconds East a distance of 222.06 feet to a point; thence South 45 Degrees 28 Minutes 14 Seconds East a distance of 350.14 feet to a point; thence South 44 Degrees 52 Minutes 48 Seconds East a distance of 547.74 feet to the **POINT OF BEGINNING**.

The above described parcel contains 59.83 acres.



VICINITY MAP  
(NOT TO SCALE)

PREPARED FOR: THE CITY OF GEORGETOWN  
 SURVEY DATE = AUGUST 2018  
 REFERENCE MERIDIAN = KENTUCKY STATE PLANE NORTH  
 NAD83 U.S. SURVEY FEET

METHOD OF SURVEY = RANDOM TRAVERSE  
 ERROR OF CLOSURE 1:460,451 (NOT ADJUSTED)

THE SURVEY AS SHOWN HEREON MEETS  
 THE REQUIREMENTS OF AN URBAN SURVEY.  
 THIS PLAT REPRESENTS A BOUNDARY  
 SURVEY AND COMPLIES WITH 201 KAR 18:150

PARENT DOCUMENT: SLIDE 2413

**LAND SURVEYOR'S CERTIFICATION:**

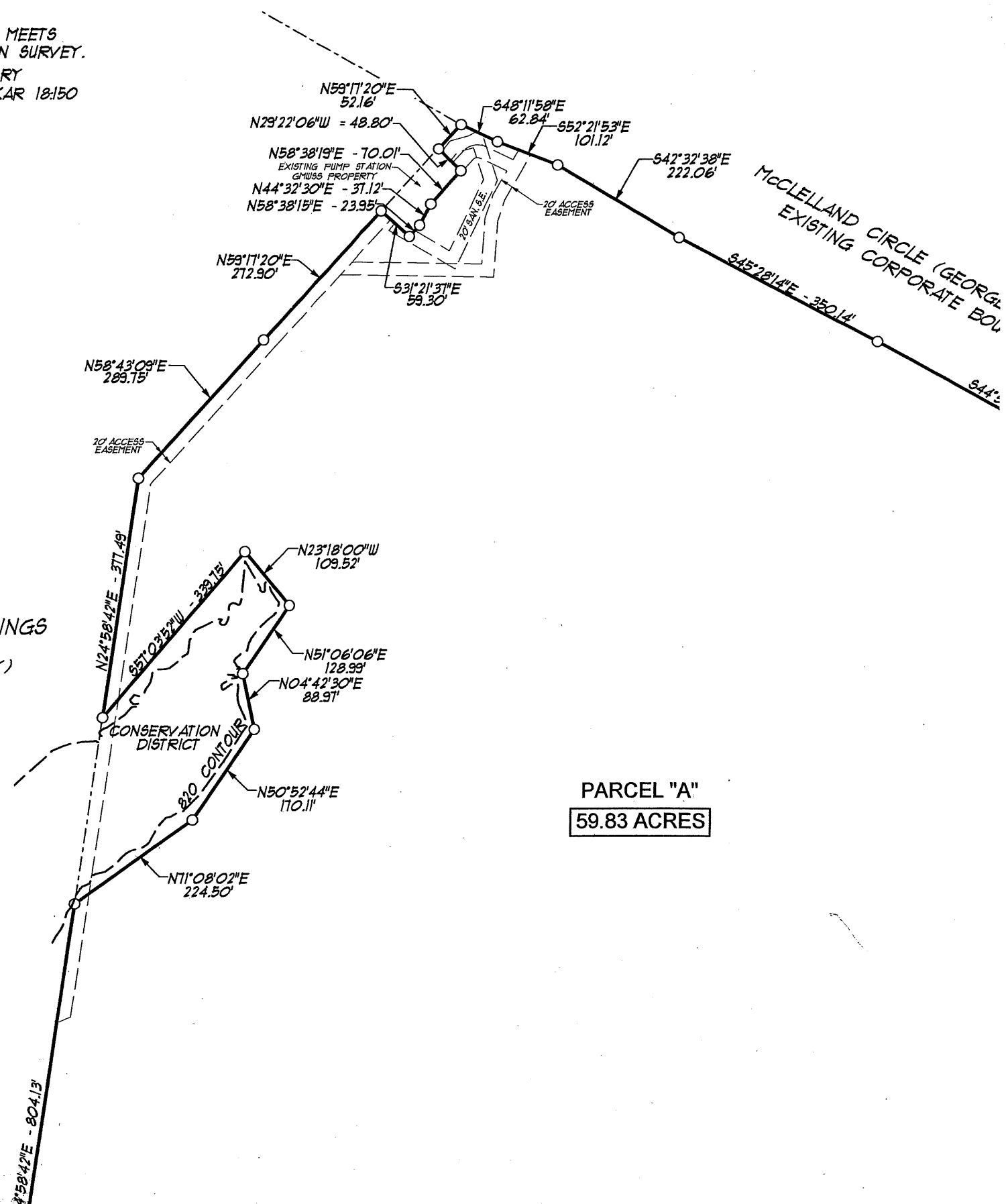
I HEREBY CERTIFY THIS PLAT WAS PREPARED BY ME, OR UNDER MY DIRECT SUPERVISION, AND THAT ALL INFORMATION INCLUDED ON THIS PLAT IS TRUE AND CORRECT TO THE BEST OF MY KNOWLEDGE AND BELIEF. THE INFORMATION CONTAINED HERE WAS COMPUTED FOR THE CITY OF GEORGETOWN, KENTUCKY, ORDINANCE NO. 2018-. THIS PLAT DEPICTS AN ANNEXATION OF A TRACT OR PARCEL OF LAND CONTIGUOUS TO THE EXISTING CORPORATE LIMITS OF THE CITY OF GEORGETOWN, KENTUCKY AND HAS BEEN FILED IN THE SCOTT COUNTY CLERK'S OFFICE. THIS PLAT DOES NOT REPRESENT AN ACTUAL SURVEY ON THE GROUND AND IS PREPARED FOR INFORMATIONAL PURPOSES ONLY. NO MONUMENTS WERE SET OR VERIFIED IN THE PREPARATION OF THIS PLAT.

2/28/19

DATE

*[Signature]*  
 RICHARD B. NUNNERY, KY PLS 3992  
 EA PARTNERS, PLC  
 3111 WALL STREET  
 LEXINGTON, KENTUCKY 40513

DUDLEY L. JENNINGS  
 (D.B. 252, PG. 41)  
 (A-1 ZONE - COUNTY)



PARCEL "A"  
 59.83 ACRES

STATE OF KENTUCKY  
 RICHARD B. NUNNERY  
 LS-3992  
 LICENSED  
 PROFESSIONAL  
 LAND SURVEYOR

*[Signature]*  
 2/28/19



PREPARED FOR: THE CITY OF GEORGETOWN  
SURVEY DATE = AUGUST 2018

REFERENCE MERIDIAN = KENTUCKY STATE PLANE NORTH  
NAD83 U.S. SURVEY FEET

METHOD OF SURVEY = RANDOM TRAVERSE  
ERROR OF CLOSURE 1:460,451 (NOT ADJUSTED)

THE SURVEY AS SHOWN HEREON MEETS  
THE REQUIREMENTS OF AN URBAN SURVEY.  
THIS PLAT REPRESENTS A BOUNDARY  
SURVEY AND COMPLIES WITH 201 KAR 18:150

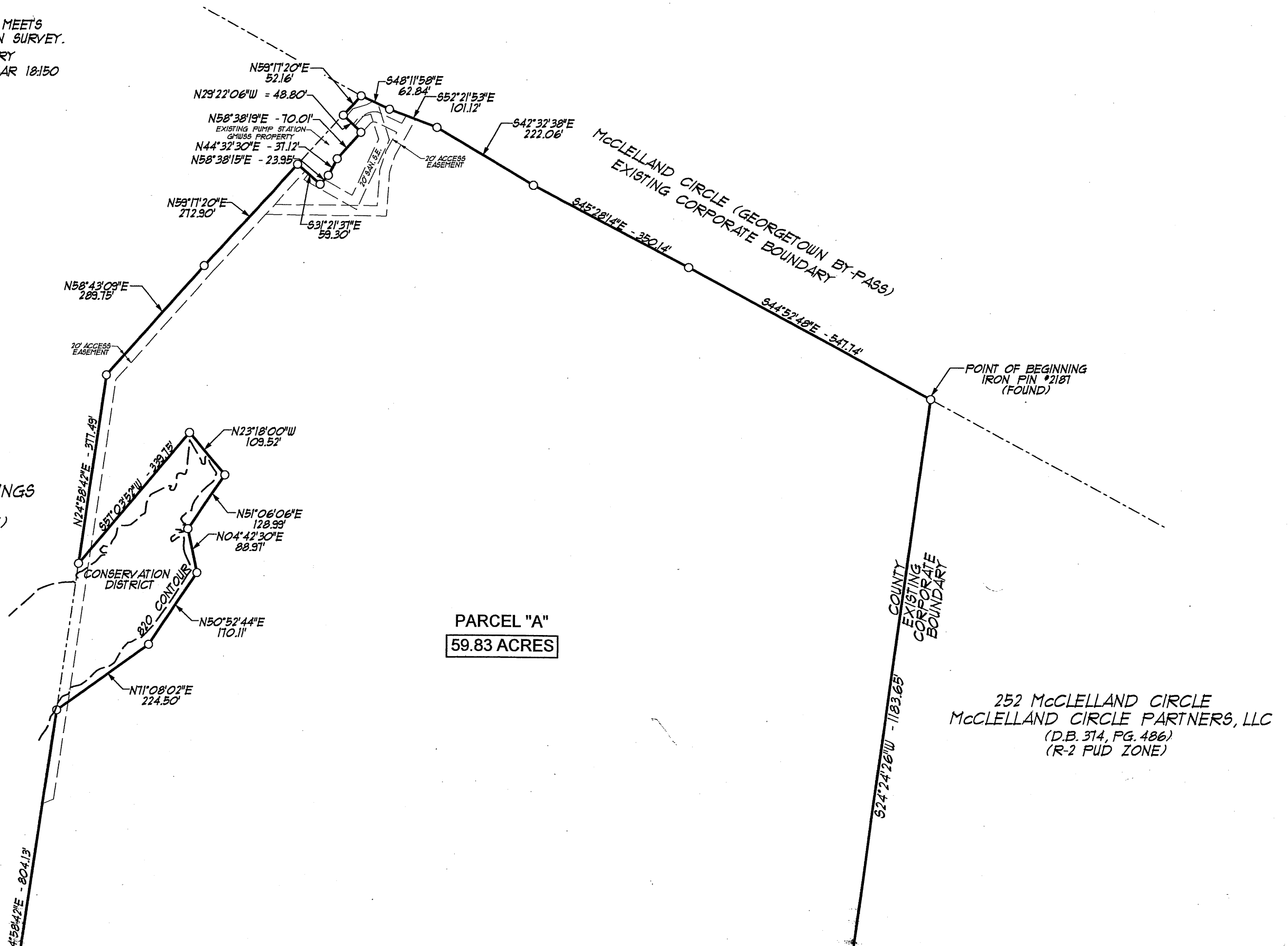
PARENT DOCUMENT: SLIDE 2413

SUPERVISION,  
TO THE BEST  
COMPUTED FOR  
LIMITS OF THE  
CLERK'S OFFICE.  
PREPARED FOR  
PREPARATION

DUDLEY L. JENNINGS  
(D.B. 252, PG. 41)  
(A-1 ZONE - COUNTY)

PLS 3992

1513



PARCEL "A"  
59.83 ACRES

252 McCLELLAND CIRCLE  
McCLELLAND CIRCLE PARTNERS, LLC  
(D.B. 314, PG. 486)  
(R-2 PUD ZONE)

OF THIS PLAN.  
2/28/19  
DATE

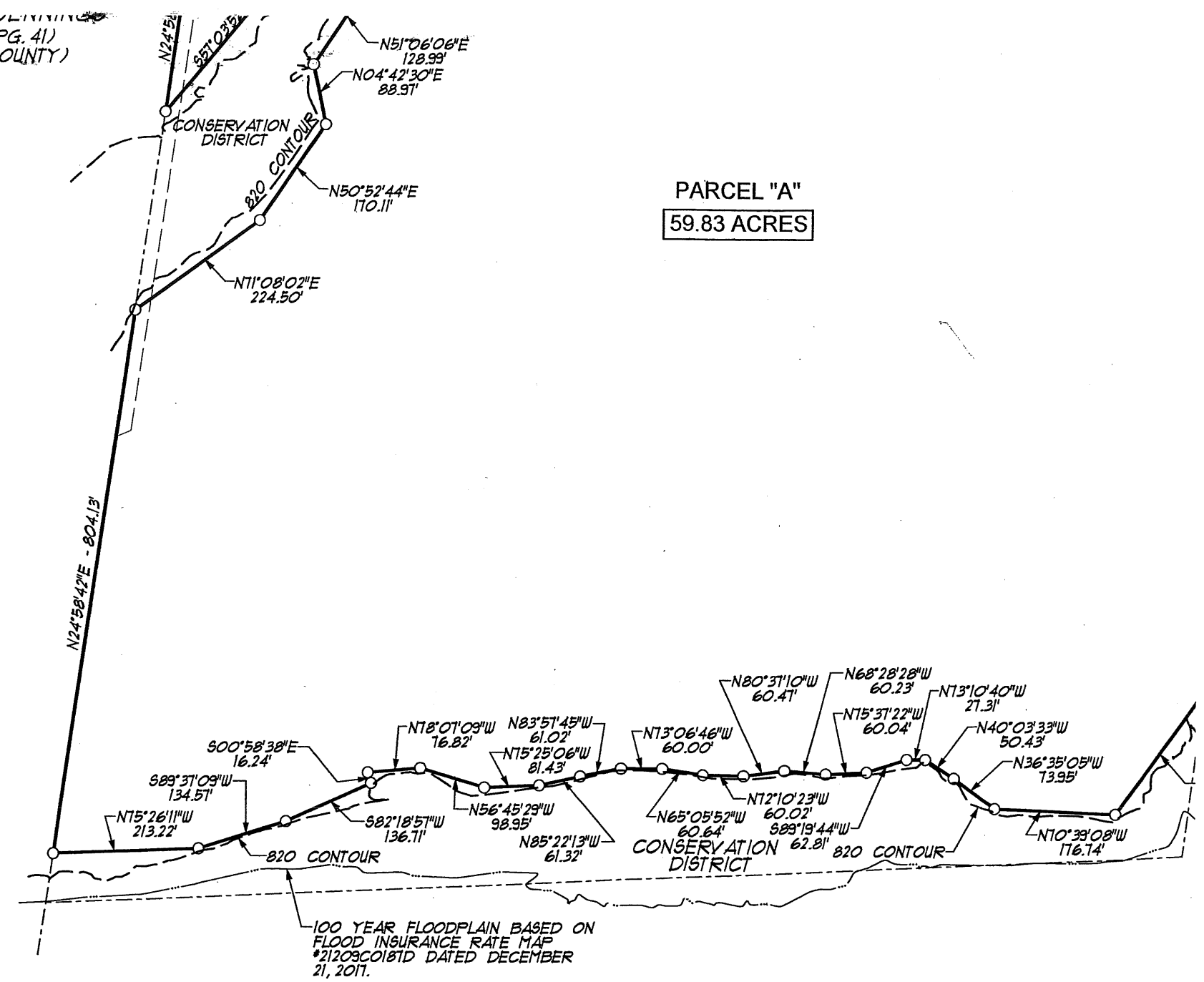
*R. B. Nunnery*  
RICHARD B. NUNNERY, KY PLS 3392  
EA PARTNERS, PLC  
3111 WALL STREET  
LEXINGTON, KENTUCKY 40513

DUPLET E. CONTINUATION  
(D.B. 252, PG. 41)  
(A-1 ZONE - COUNTY)

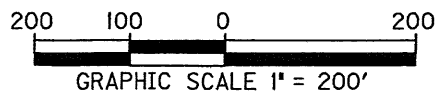
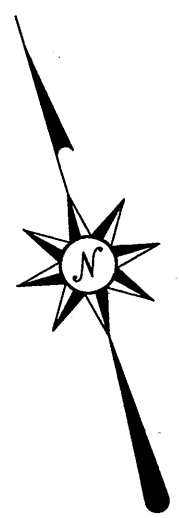
STATE OF KENTUCKY  
RICHARD B. NUNNERY  
LS-3392  
LICENSED  
PROFESSIONAL  
LAND SURVEYOR

*R. B. Nunnery*  
2/28/19

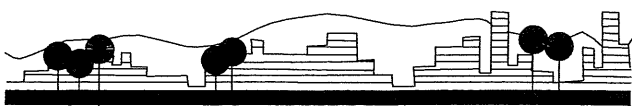
PARCEL "A"  
59.83 ACRES



DUNRAVEN, LLC  
(D.B. 388, PG. 106)  
(A-1 ZONE - COUNTY)



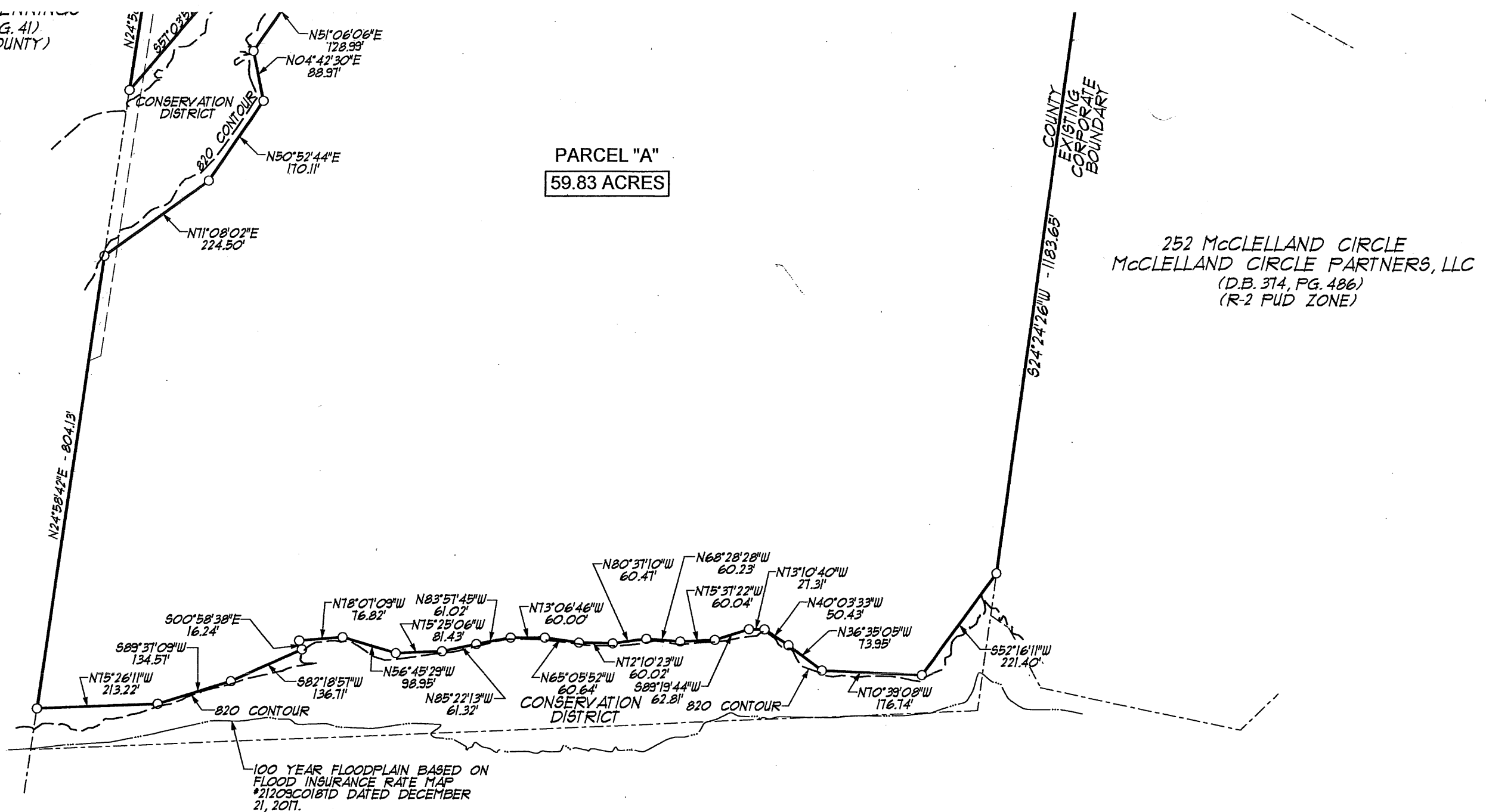
EA Partners, PLLC



CIVIL ENGINEERS • LAND SURVEYORS • LANDSCAPE ARCHITECTS  
3111 WALL STREET  
LEXINGTON, KENTUCKY 40513  
PHONE (859) 296-9889  
FACSIMILE (859) 296-9887

ANN  
SC  
McC  
GEORGETOWN  
DI

(D.B. 252, PG. 41)  
(A-1 ZONE - COUNTY)



252 McCLELLAND CIRCLE  
McCLELLAND CIRCLE PARTNERS, LLC  
(D.B. 314, PG. 486)  
(R-2 PUD ZONE)

DUNRAVEN, LLC  
(D.B. 388, PG. 106)  
(A-1 ZONE - COUNTY)

ANNEXATION EXHIBIT  
SOUTH CROSSING  
McCLELLAND CIRCLE  
GEORGETOWN, SCOTT COUNTY, KENTUCKY  
DECEMBER, 2018

